



PHARMAC Factors for Consideration

are used throughout



PHARMAC Factors for Consideration

are used throughout



The journey of a funding application

A supplier, health professional, or an everyday New Zealander can apply for a medicine or related product to be funded.

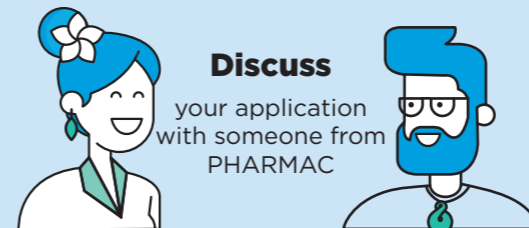
Prepare

your application by collating all relevant information



Discuss

your application with someone from PHARMAC



Submit

your application via PHARMConnect



Application Tracker

See your application status online



PTAC

Advice
PHARMAC receives recommendations from independent clinical experts from across New Zealand's health care sector who sit on the Pharmacology and Therapeutics Advisory Committee (PTAC) and its subcommittees



Review

PHARMAC reviews and evaluates the evidence, including others' submissions on the same medicine.



Subcommittees

Recommendations

Assess

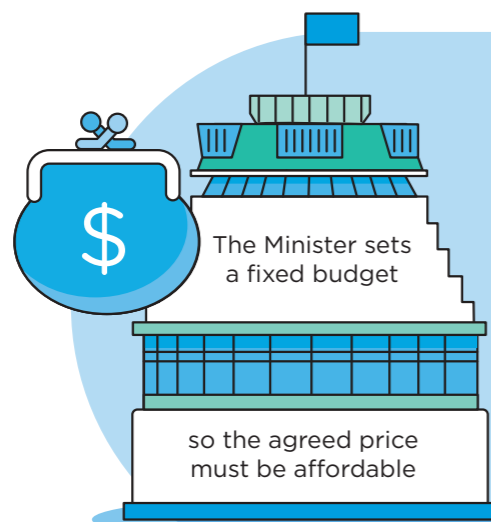
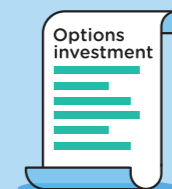
PHARMAC considers the clinical advice and assesses the medicine. Research and economic analysis take place



HIGH
Ranking
LOW

Compare options

PHARMAC compares and ranks medicines

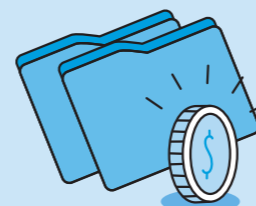


The Minister sets a fixed budget

so the agreed price must be affordable

Negotiate

PHARMAC negotiates price with suppliers



Identify

PHARMAC identifies which medicines on the list to take forward



Prioritise

A prioritised list of medicines for funding is created

Provisional agreement

PHARMAC and the supplier confirm a provisional agreement

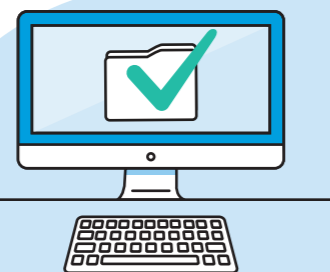


Consult

We ask New Zealanders what they think



Consider submissions



Final decision

The PHARMAC board or delegate makes a final decision



Final changes

PHARMAC staff make any changes necessary following the consultation submissions



Notification

PHARMAC notifies the decision to health professionals and the public

Listed

If approved, the medicine or related products are listed on the Pharmaceutical Schedule



PHARMAC
TE PĀTAKA WHAIORANGA

For further information visit pharmac.govt.nz

The process set out in this diagram is intended to be indicative of the process that may follow where a supplier or other applicant wishes a pharmaceutical to be funded on the Pharmaceutical Schedule. PHARMAC may, at its discretion, adopt a different process or variations of the process. For example, we decide whether or not it is appropriate to undertake consultation on a case-by-case basis.



Application Tracker

See your application status online